

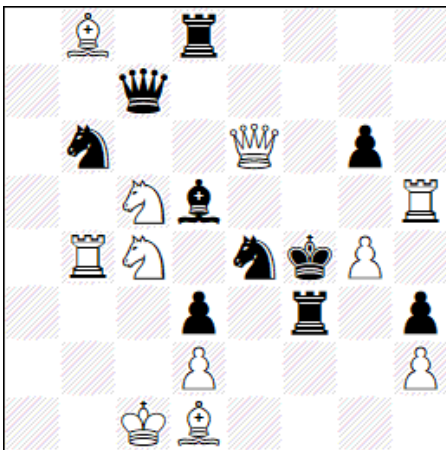
42. Deutsche Meisterschaft im Lösen von Schachproblemen

Hüllhorst Runde 1: #2 – 20 min.

24. – 25. März 2018

Name

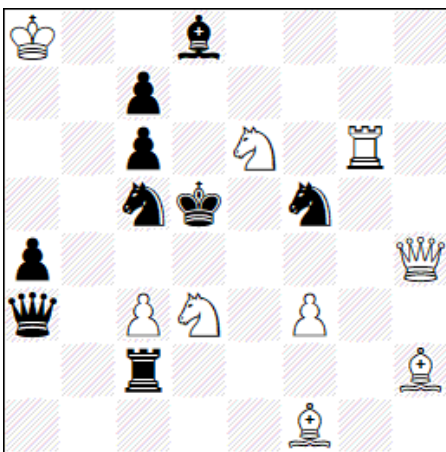
1



#2

11+10

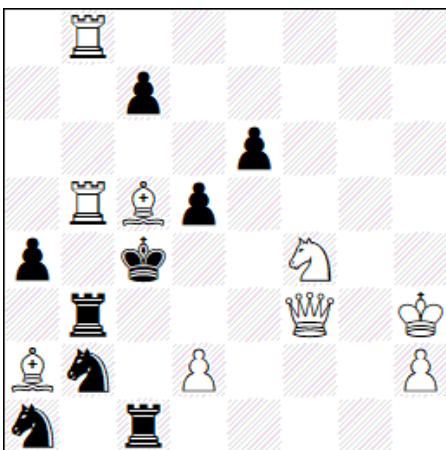
2



#2

9+9

3



#2

9+9

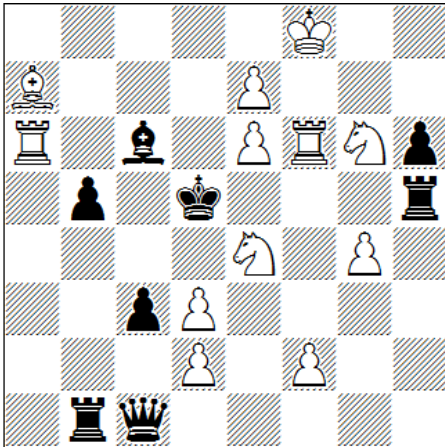
42. Deutsche Meisterschaft im Lösen von Schachproblemen

Hüllhorst Runde 2: #3 – 60 min.

24. – 25. März 2018

Name

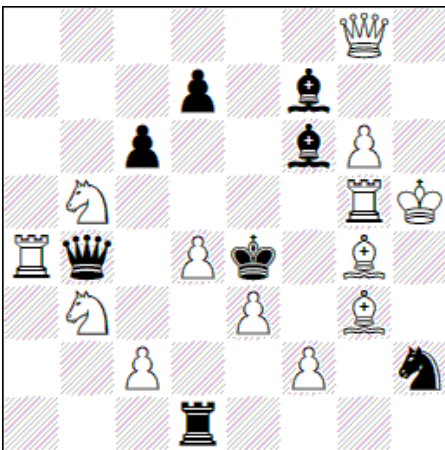
4



#3

12+8

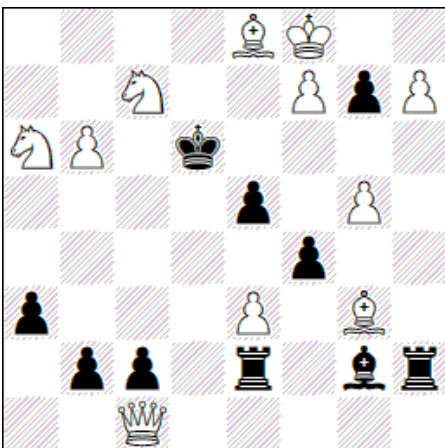
5



#3

13+8

6



#3

11+10

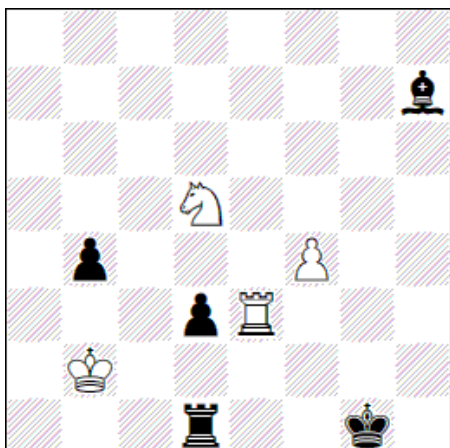
42. Deutsche Meisterschaft im Lösen von Schachproblemen

Hüllhorst Runde 3: e.g. – 100 min.

24. – 25. März 2018

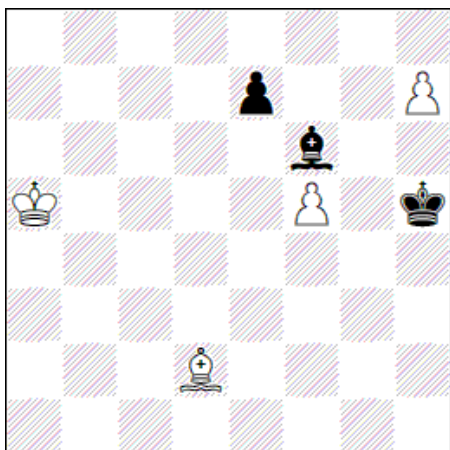
Name

7



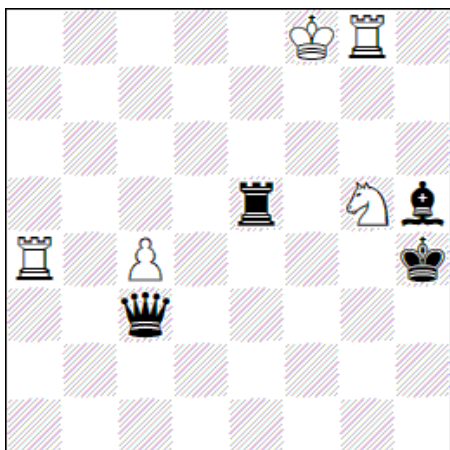
= 4+5

8



+ 4+3

9



= 5+4

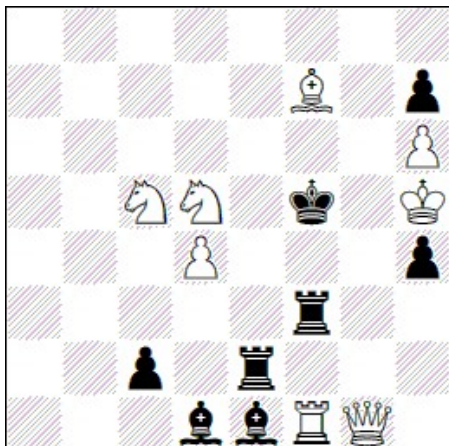
42. Deutsche Meisterschaft im Lösen von Schachproblemen

Hüllhorst Runde 4: S# – 50 min.

24. – 25. März 2018

Name

10

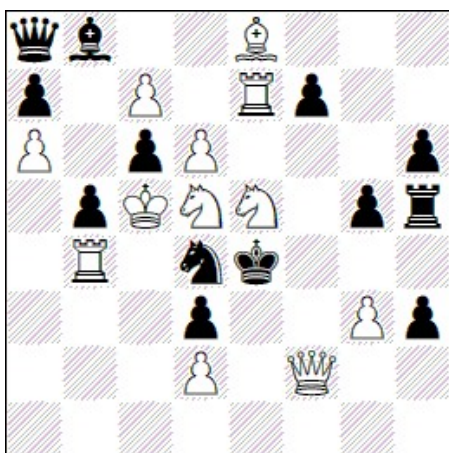


Misprint: bPc2 must be on d2

S#2

8+8

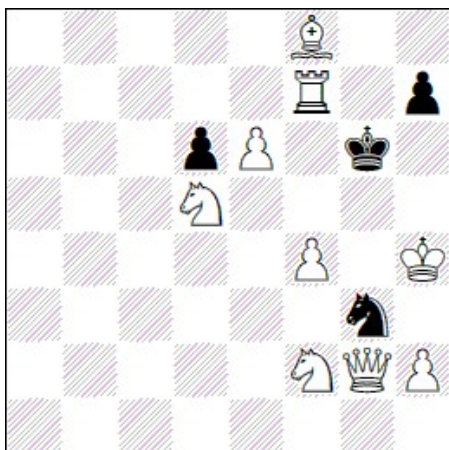
11



S#3

12+13

12



S#5

9+4

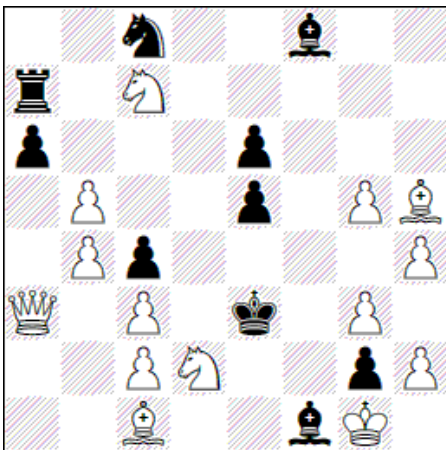
42. Deutsche Meisterschaft im Lösen von Schachproblemen

Hüllhorst Runde 5: n# – 80 min.

24. – 25. März 2018

Name

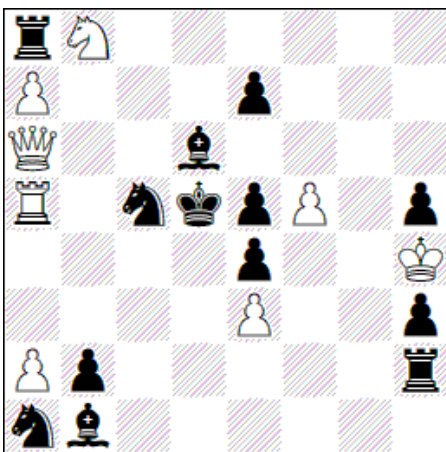
13



#4

14+10

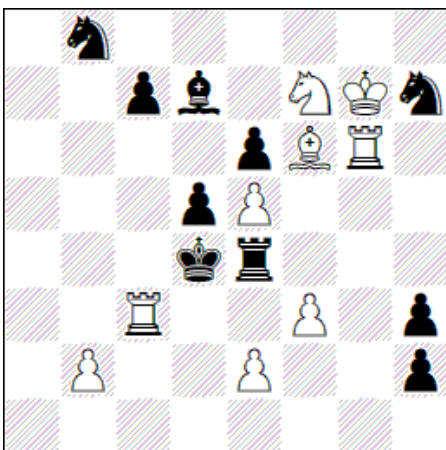
14



#5

8+13

15



#7

9+10

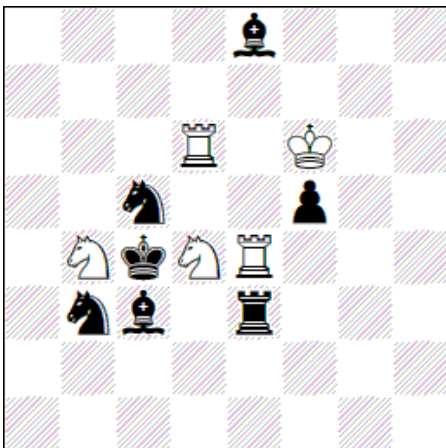
42. Deutsche Meisterschaft im Lösen von Schachproblemen

Hüllhorst Runde 6: H# – 50 min.

24. – 25. März 2018

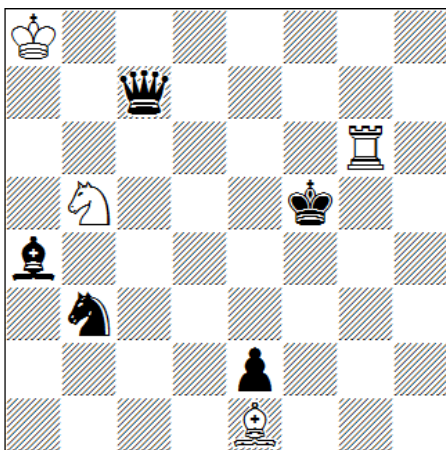
Name

16



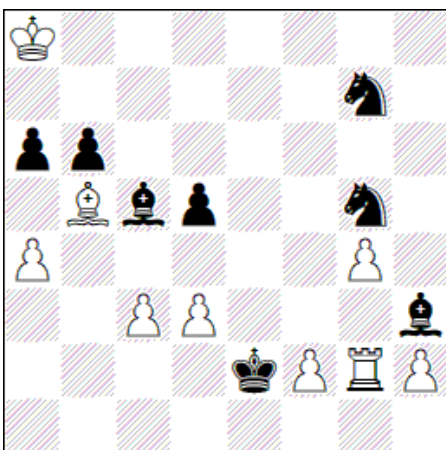
H#2 2 sol. 5+7

17



H#3 2 sol 4+5

18



H#3,5 2 sol 9+8